

Current Data Parameters
NAME Rd
EXPNO 2
PROCNO 1

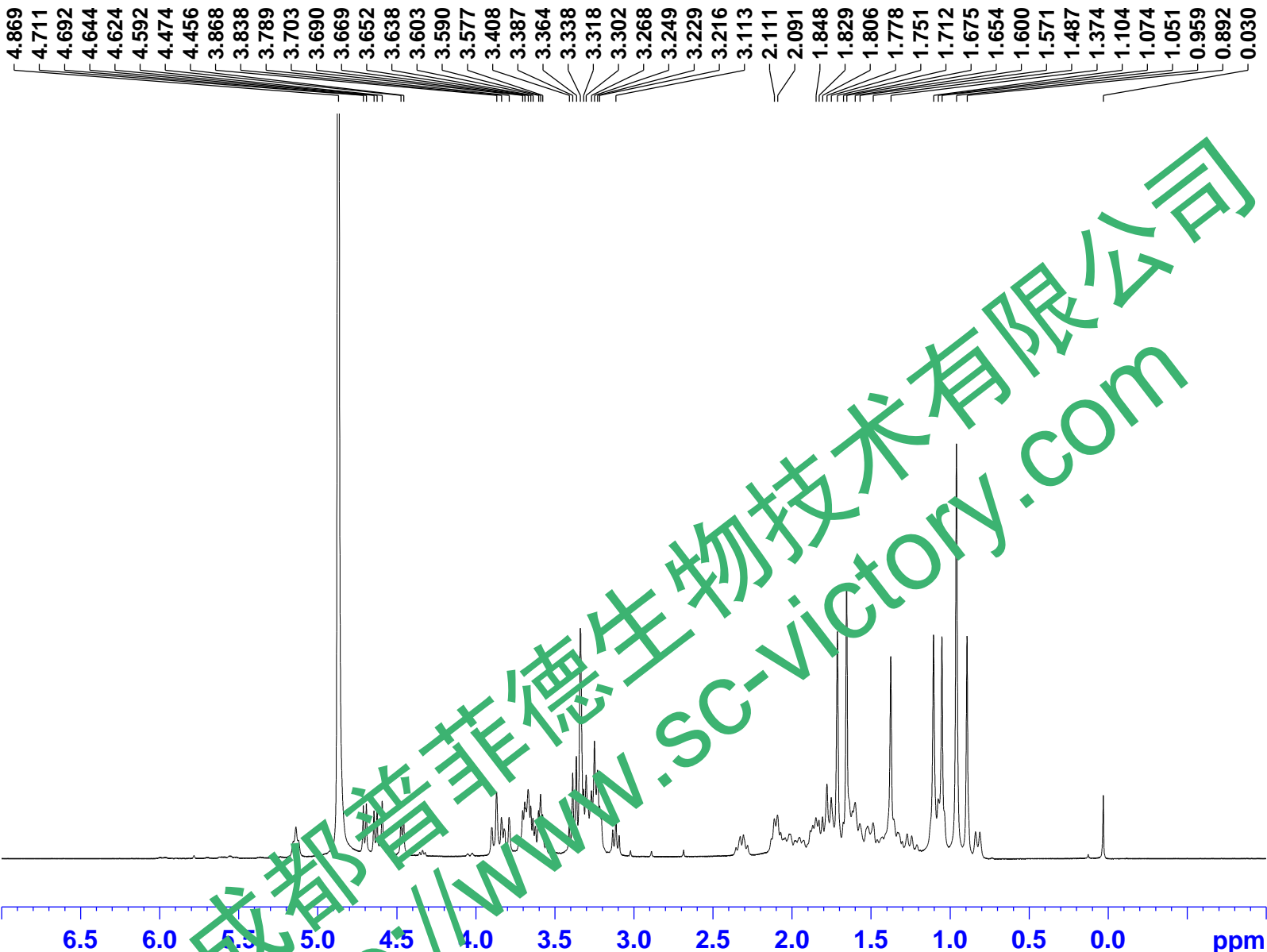
F2 - Acquisition Parameters
Date_ 20141210
Time 17.11
INSTRUM spect
PROBHD 5 mm PABBO BB-
PULPROG zgpg30
TD 65536
SOLVENT MeOD
NS 1024
DS 4
SWH 24038.461 Hz
FIDRES 0.366798 Hz
AQ 1.3631988 sec
RG 194.85
DW 20.800 usec
DE 6.50 usec
TE 300.0 K
D1 2.00000000 sec
D11 0.03000000 sec
TD0 1

==== CHANNEL f1 =====
NUC1 13C
P1 9.24 usec
PLW1 95.00000000 W
SFO1 100.6228293 MHz

==== CHANNEL f2 =====
CPDPRG2 waltz16
NUC2 1H
PCPD2 80.00 usec
PLW2 19.00000000 W
PLW12 0.25292000 W
PLW13 0.16187000 W
SFO2 400.1316005 MHz

F2 - Processing parameters
SI 32768
SF 100.6126279 MHz
WDW EM
SSB 0
LB 1.00 Hz
GB 0
PC 1.40

成都普菲德生物技术有限公司
<http://www.SC-victory.com>



Current Data Parameters
NAME Rd
EXPNO 1
PROCNO 1

F2 - Acquisition Parameters
Date_ 20141210
Time 17.07
INSTRUM spect
PROBHD 5 mm PABBO BB-
PULPROG zg30
TD 65536
SOLVENT MeOD
NS 16
DS 2
SWH 8223.685 Hz
FIDRES 0.125483 Hz
AQ 3.9846387 sec
RG 59.05
DW 60.800 usec
DE 6.50 usec
TE 299.5 K
D1 1.0000000 sec
TD0 1

==== CHANNEL f1 =====
NUC1 1H
P1 9.23 usec
PLW1 20.0000000 W
SFO1 400.1324710 MHz

F2 - Processing parameters
SI 65536
SF 400.1299974 MHz
WDW EM
SSB 0
LB 0.30 Hz
GB 0
PC 1.00

成都普菲德生物技术有限公司
http://www.sc-victory.com